



Te Puna Whare Mātauranga ā Kura

SLANZA

School Library Association of New Zealand Aotearoa



BOOK PROTECTION

QUALITY BOOK & LIBRARY SUPPLIES

BWB BRIDGET WILLIAMS BOOKS



GALE



curiously good books



HarperCollins

int. workspaces

officespace libraryspace hospitalityspace



Accessit by Follett Software

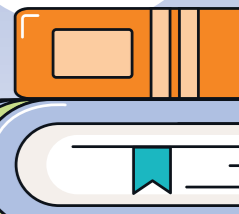


perform! EDUCATION



REPORT YOUR CHALLENGE
LIANZA LIBRARY CHALLENGES REGISTER
WWW.LIANZA.ORG.NZ

scis Schools Catalogue Information Service



JAN	FEB	MAR	APR	MAY	JUN	JUL	AUG	SEP	OCT	NOV	DEC
1 THU New Year's Day	1 SUN	1 SUN	1 WED	1 FRI ^{NZ Music Month}	1 MON King's Birthday Schools Pride Week (1 - 5) ^{Out on the Shelves}	1 WED	1 SAT	1 TUE	1 THU World Vegetarian Day	1 SUN World Vegan Day Día de los Muertos/Day of the Dead (1-2)	1 TUE
2 FRI	2 MON Nelson Anniversary Day	2 MON	2 THU World Autism Awareness Day International Children's Book Day	2 SAT International Harry Potter Day	2 TUE	2 THU	2 SUN Cook Island Language Week (2 - 8)	2 WED	2 FRI	2 MON Marlborough Anniversary Day	2 WED
3 SAT	3 TUE	3 TUE World Wildlife Day	3 FRI Good Friday School Holidays (3 - 19)	3 SUN	3 WED World Bicycle Day	3 FRI	3 MON	3 THU	3 SAT	3 TUE	3 THU International Day of Persons with Disabilities
4 SUN World Braille Day	4 WED	4 WED Holi	4 SAT	4 MON NZ Sign Language Week (4 - 10)	4 THU	4 SAT School Holidays (4 - 19)	4 TUE	4 FRI	4 SUN World Animal Day Fijian Language Week (4 - 10)	4 WED	4 FRI NCEA Exams Finish
5 MON	5 THU World Read Aloud Day	5 THU	5 SUN Easter Sunday	5 TUE	5 FRI Arbor Day World Environment Day	5 SUN Kiribati Language Week (5 - 11)	5 WED	5 SAT	5 MON World Teachers Day	5 THU	5 SAT
6 TUE	6 FRI Waitangi Day	6 FRI World Book Day	6 MON Easter Monday	6 WED	6 SAT	6 MON	6 THU	6 SUN Father's Day Papua New Guinea Pidgin Language Week (6 - 12)	6 TUE	6 FRI	6 SUN
7 WED	7 SAT	7 SAT	7 TUE World Health Day Southland Anniversary Day	7 THU	7 SUN	7 TUE	7 FRI	7 MON	7 WED	7 SAT	7 MON
8 THU	8 SUN	8 SUN International Women's Day	8 WED	8 FRI	8 MON	8 WED	8 SAT	8 TUE International Literacy Day	8 THU	8 SUN	8 TUE
9 FRI	9 MON	9 MON Taranaki Anniversary Day	9 THU	9 SAT	9 TUE	9 THU	9 SUN International Day of the World's Indigenous Peoples	9 WED	9 FRI	9 MON Nursery Rhyme Week (9 - 14)	9 WED
10 SAT	10 TUE	10 TUE	10 FRI	10 SUN Mother's Day Bullying-Free Week (10 - 16) Rotuman Language Week (10 - 16)	10 WED	10 FRI Matariki Teddy Bear's Picnic Day	10 MON Aotearoa School Library Week	10 THU	10 SAT World Mental Health Day	10 TUE NCEA Exams Start	10 THU Human Rights Day
11 SUN	11 WED	11 WED	11 SAT	11 MON Road Safety Week (11 - 17)	11 THU	11 SAT World Population Day	11 TUE Maths Week (10 - 14)	11 FRI	11 SUN	11 WED Armistice Day	11 FRI International Mountain Day
12 MON	12 THU	12 THU	12 SUN	12 TUE	12 FRI	12 SUN	12 WED International Youth Day	12 SAT	12 MON	12 THU	12 SAT
13 TUE	13 FRI	13 FRI	13 MON	13 WED	13 SAT	13 MON	13 THU	13 SUN Te Wiki o Te Reo Māori (13 - 19)	13 TUE	13 FRI World Kindness Day Canterbury Anniversary Day Transgender Awareness Week (13 - 19)	13 SUN
14 WED	14 SAT	14 SAT	14 TUE	14 THU	14 SUN	14 TUE	14 FRI	14 MON	14 WED	14 SAT	14 MON
15 THU	15 SUN	15 SUN	15 WED	15 FRI Pink Shirt Day International Day of Families	15 MON	15 WED	15 SAT	15 TUE International Dot Day	15 THU	15 SUN	15 TUE
16 FRI	16 MON	16 MON	16 THU	16 SAT	16 TUE	16 THU	16 SUN Tongan Language Week (16 - 22)	16 WED	16 FRI	16 MON	16 WED
17 SAT	17 TUE Ramadan begins Lunar New Year	17 TUE St Patrick's Day	17 FRI	17 SUN	17 WED	17 FRI	17 MON	17 THU	17 SAT	17 TUE	17 THU
18 SUN	18 WED Lent begins	18 WED	18 SAT	18 MON	18 THU	18 SAT International Nelson Mandela Day	18 TUE	18 FRI	18 SUN Niuean Language Week (18 - 24)	18 WED	18 FRI
19 MON Wellington Anniversary Day	19 THU	19 THU Eid al-Fitr (19 - 20)	19 SUN	19 TUE	19 FRI	19 SUN	19 WED	19 SAT	19 MON	19 THU	19 SAT
20 TUE	20 FRI	20 FRI International Day of Happiness	20 MON	20 WED	20 SAT	20 MON World Chess Day	20 THU	20 SUN	20 TUE	20 FRI	20 SUN
21 WED	21 SAT	21 SAT Margaret Mahy's Birthday World Poetry Day World Down Syndrome Day	21 TUE	21 THU	21 SUN	21 TUE	21 FRI	21 MON Mental Health Awareness Week (not confirmed) (21 - 27)	21 WED	21 SAT	21 MON
22 THU	22 SUN	22 SUN	22 WED Earth Day	22 FRI	22 MON	22 WED	22 SAT	22 TUE	22 THU	22 SUN	22 TUE
23 FRI	23 MON	23 MON Otago Anniversary Day	23 THU	23 SAT	23 TUE	23 THU	23 SUN	23 WED	23 FRI Hawkes Bay Anniversary Day	23 MON	23 WED
24 SAT	24 TUE	24 TUE	24 FRI	24 SUN	24 WED	24 FRI	24 MON	24 THU	24 SAT Global Media and Information Literacy Week (24 - 31)	24 TUE	24 THU
25 SUN	25 WED	25 WED	25 SAT ANZAC Day	25 MON	25 THU	25 SAT	25 TUE	25 FRI	25 SUN Tokelauan Language Week (25 - 31)	25 WED	25 FRI
26 MON Northland, Auckland and Waikato Anniversary Day	26 THU	26 THU	26 SUN	26 TUE Eid al-Adha (26 - 30)	26 FRI	26 SUN Vanuatu Language Week (26 Jul - 1 Aug)	26 WED	26 SAT School Holidays (26 Sep - 11 Oct) European Day of Languages	26 MON Labour Day	26 THU	26 SAT Boxing Day
27 TUE	27 FRI	27 FRI	27 MON ANZAC Day Observed	27 WED	27 SAT	27 MON	27 THU	27 SUN Tuvalu Language Week (27 Sep - 3 Oct)	27 TUE	27 FRI	27 SUN
28 WED	28 SAT NZ Sea Week (28 Feb - 9 Mar)	28 SAT	28 TUE	28 THU	28 SUN	28 TUE	28 FRI National Poetry Day	28 MON South Canterbury Anniversary Day	28 WED Rā Maumahara/NZ Wars Commemoration Day	28 SAT	28 MON Boxing Day Observed
29 THU		29 SUN	29 WED	29 FRI	29 MON	29 WED	29 SAT	29 TUE	29 THU	29 SUN	29 TUE
30 FRI		30 MON	30 THU	30 SAT	30 TUE	30 THU International Day of Friendship	30 SUN Chinese Language Week (not confirmed) (30 Aug - 5 Sep)	30 WED	30 FRI	30 MON Chatham Islands & Westland Anniversary Day	30 WED
		31 TUE		31 SUN Samoan Language Week (31 Mar - 6 Jun)		31 FRI	31 MON Conservation Week (not confirmed) (31 Aug - 6 Sep)		31 THU	31 THU	31 THU

2026