

When cruise chips sail into port...

Wendy Murray
Annette Williams
Christchurch City Libraries



**surviving the summer
at a joint use school
and community library**



Akaroa Area School

- Roll – 139
- Decile 8
- Years 1 - 13
- Technology Training Centre



Akaroa Library

- 1860 Literary and Scientific Institute (later Mechanic's Institute)
- 1875 Coronation Library
- 1989 new school and community library
- 2005 new library building on Rue Jolie
- 2006 local government amalgamation



Akaroa School and Community Library 2006-2011

- Part of Christchurch City Libraries network
- Staffing
- Joint management
- Community relationship
- 2009 – free internet



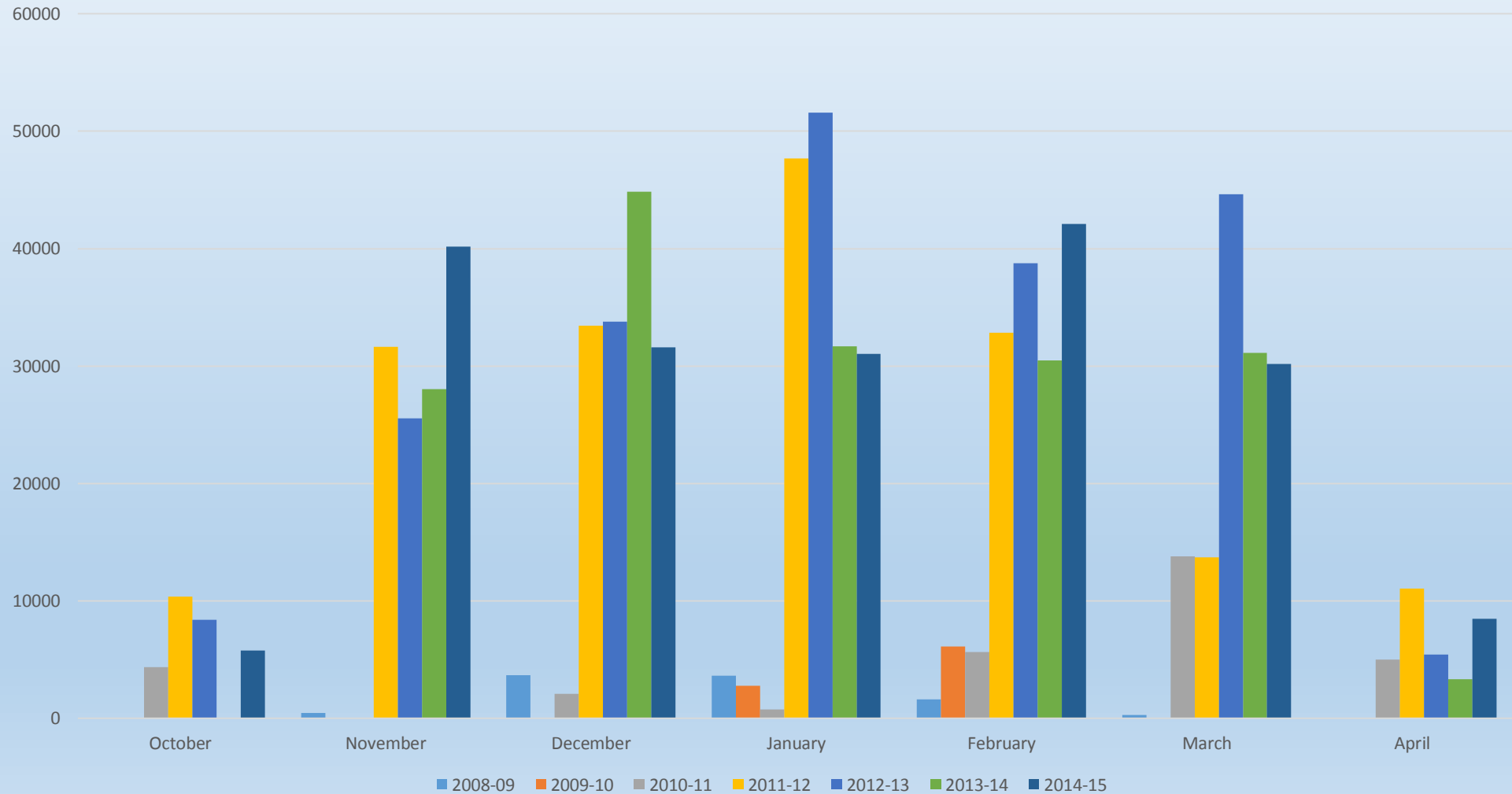
2011 earthquakes and after-effects

- Staffing changes
- Population shifts
- Damage to Port Lyttelton
- Diversion of cruise ships to Akaroa



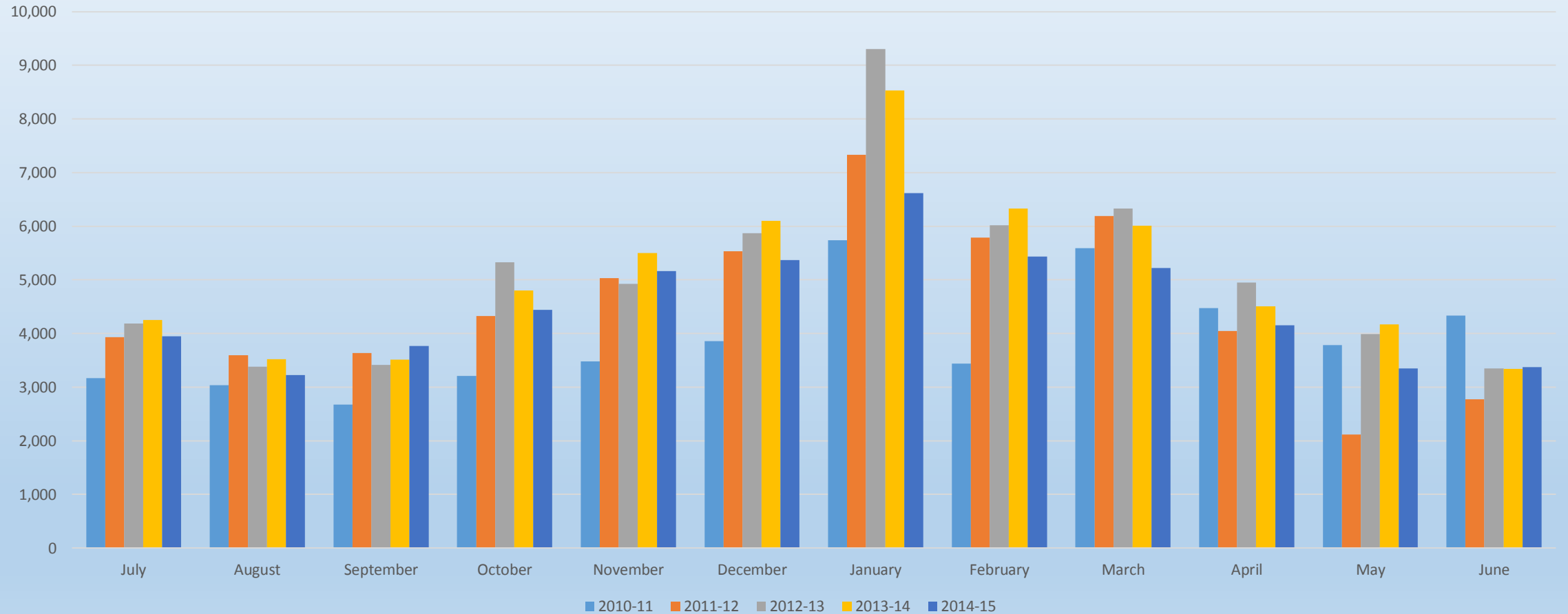
Cruise ships to Akaroa

Cruise ship passenger and crew numbers



Impact of cruise ships and summer visitors

Library Foot Count



Summer 2011-12

- PC demand
- Supporting discovery learning
- Impact on library staff
- Managing spaces for locals and visitors

Response and planning for 2012-2013

- Staff cover; PC session duration
- Communication challenges
- Staff presence and support
- Local information partnerships



Summer 2012-13

- Use of casual staff to plan for unknown
- Wifi roll-out
- Personal devices – challenges
- Impact of high numbers on school, community and library environment

Review with School – issues and solutions

- Issue of free internet
- Constraints on school use of library
- Impact of ship crews



Planning 2013-14

- Benches
- Additional PC
- Heat pumps
- Staffing planning
- Cordons



Summer 2013-14

First half of summer

- Cordons, benches successful
- Advances in technology – use of PDAs
- Wifi and connection speed issues
- Staff confidence
- Improved library environment



Summer 2013-14 cont.

Second half of summer

- Staffing hours review
- Very high visitor numbers
- Staff stress
- Preparing for RFID



And to top it off...

Storms in February March and April

- **Gale-force winds**
- **Flooding**
- **Slips blocking roads**
- **Power outages**
- **Stranded library staff**



Review 2013-14

Planning 2014-15

Review:

- Benches a winner
- Class visits and cordons
- Bus park relocation
- Busiest day non cruise ship

Planning:

- RFID implementation in April
- Updating library information on local websites
- Impact of I Site Centre closing



Summer 2014-15

- **Positive impact of technology**
 - **RFID**
 - **Wifi upgraded**
 - **Increased use of PDAs**
- **Staff management**
- **Cruises – numbers; pink**

Review:

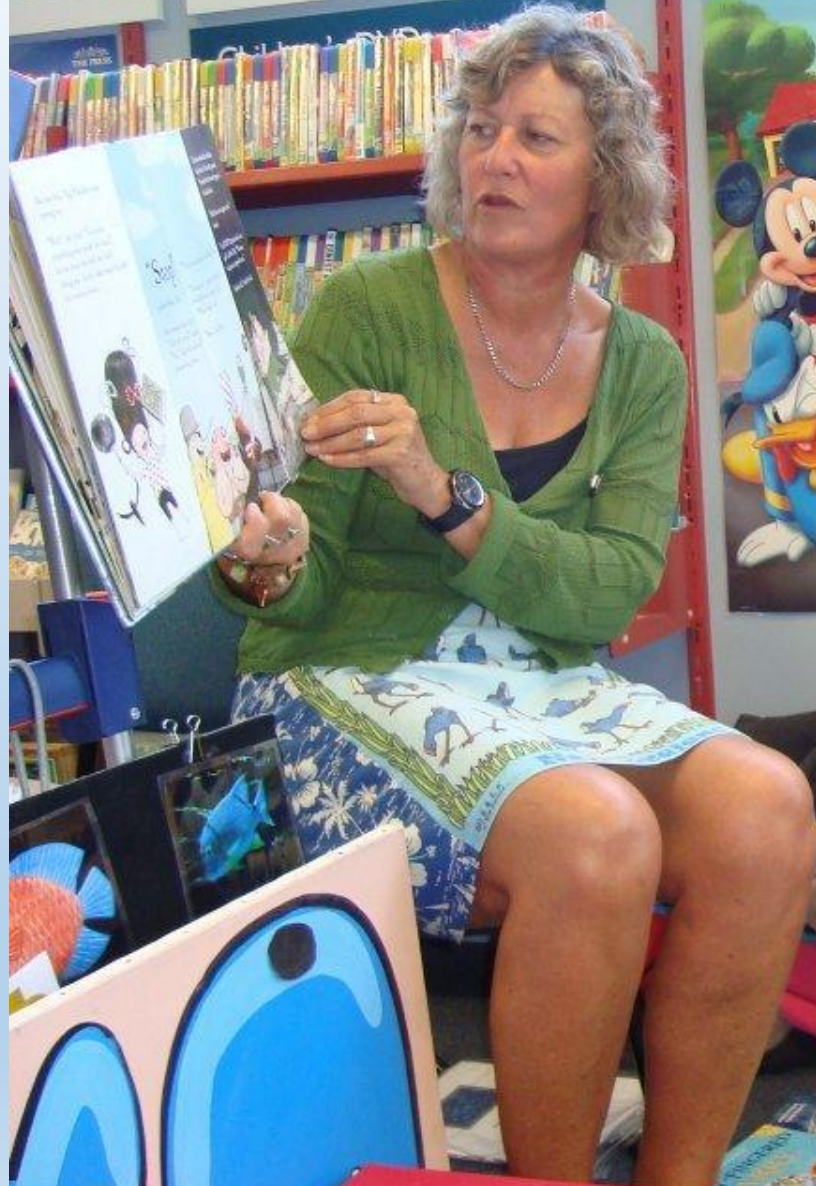
- **Library – more manageable**
- **School – issues and opportunities**
 - **educational**
 - **financial**



Relationship with School

- Regular class visits junior school
- Support from city libraries network
- High reserves use by children
- Joint Use Management agreement in operation
- Regular meetings of Wendy with junior school staff
- Connection with CCL Maori Services Team
- Challenge - secondary classes and use of library resources





Māori Body Parts		Māori Counting	
By Zahra Tah Tah!			
Upeka / Mōkōwhiri	Upeka / Mōkōwhiri	1 tahi	2 rua
Waka	Waka	3 toru	4 whā
Footstool / Pōhaka	Footstool / Pōhaka	5 rima	6 ono
Roast	Roast	7 whitu	8 wānui
Tūtū	Tūtū	9 iwa	10 tekau



Relationship with community

- Very close supportive community, high level of ownership
- Regular storytelling in school holidays
- Matariki
- Public programmes eg computer classes
- Local community relationships
- Strategic alliances identified
- Upskilling of library staff
- Feedback from community





Welcome to Akaaroa
Haere Mai
Bienvenue à Akaoroa

Where do you come from?



The World
The New Zealand Project

Wellington

New Zealand
(Aotearoa)



Learnings

- Regular reviews and meetings with school
- Communication – in time and in case
- Planning in advance for knowns
- Flexible approach for the unknowns
- Creative solutions
- Library staff – share and support

Opportunities for the future

- Life after cruise ships
- School future planning
- Library as a performance space
- Library as an educational resource
- Staff development – Akaroa and Christchurch
- Further development of joint use model

